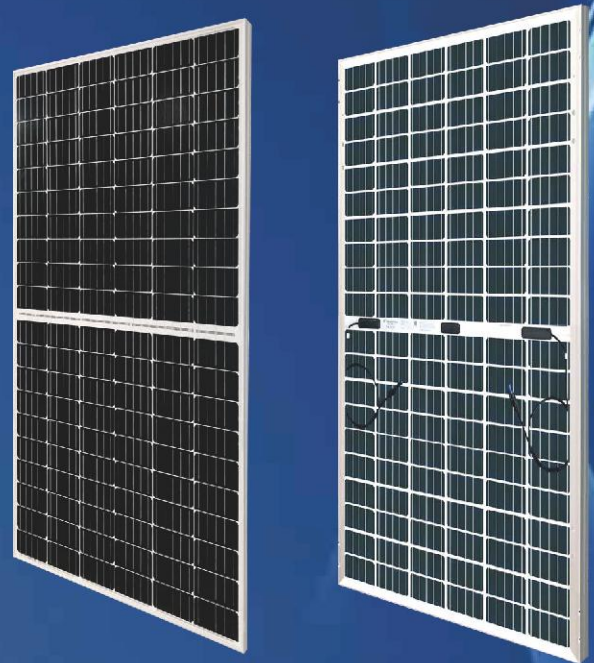




PERC BIFACIAL PV MODULE

ET-M660BH330TW	330W
ET-M660BH335TW	335W
ET-M660BH340TW	340W
ET-M660BH345TW	345W
ET-M660BH350TW	350W



Enhanced safety by excellent fire resistance

*5BB and MBB can be provided upon request.



Perfect for sandy, snowy and high latitude regions



Bifacial technology enables additional energy harvesting from rear side(up to 25%)

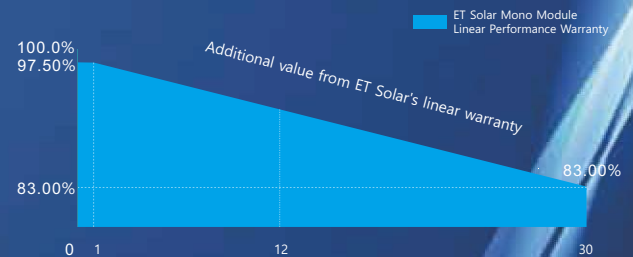


Lower operating temperature, more reliable



Cut cell, Less internal power loss, Less mismatch loss

WARRANTY



IEC61215
IEC61730
UL61215
UL61730



Guarantee on product material and workmanship



linear power output warranty

ET SOLAR
sales@etsolar.gr



M/ET-PD-EN-EU2021V2

ELECTRICAL SPECIFICATIONS

Module Type	ET-M660BH330TW		ET-M660BH335TW		ET-M660BH340TW		ET-M660BH345TW		ET-M660BH350TW	
	STC	NOCT	STC	NOCT	STC	NOCT	STC	NOCT	STC	NOCT
Maximum Power -P _{mp} (W)	330W	246W	335W	250W	340W	253W	345W	256W	350W	260W
Open Circuit Voltage -V _{oc} (V)	33.80V	32.24V	34.10V	32.49V	34.40V	32.74V	34.68V	32.99V	34.88V	33.24V
Short Circuit Current -I _{sc} (A)	9.77A	7.63A	9.83A	7.69A	9.89A	7.74A	9.95A	7.78A	10.04A	7.83A
Maximum Power Voltage -V _{mp} (V)	40.60V	39.34V	40.80V	39.58V	41.00V	39.80V	41.20V	40.02V	41.40V	40.24V
Maximum Power Current -I _{mp} (A)	10.30A	8.11A	10.35A	8.20A	10.40A	8.26A	10.43A	8.33A	10.55A	8.40A
Module Efficiency STC-η _m (%)	19.6%		19.9%		20.1%		20.4%		20.7%	
Power Tolerance (W)					(0 , +4.99)					
Pmax Temperature Coefficient					-0.331%/°C					
Voc Temperature Coefficient					-0.257 %/°C					
Isc Temperature Coefficient					+0.052 %/°C					
Fire Performance					Class C(TUV)/Type 1(ETL)					

STC: Irradiance 1000 W/m² module temperature 25°C AM=1.5

REAR SIDE POWER GAIN (ET-M660BH340TW)

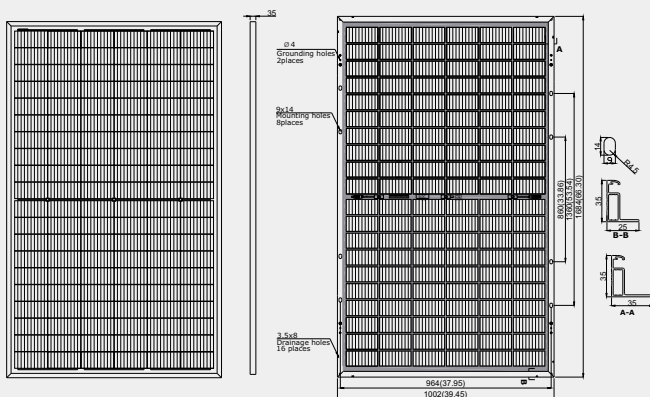
Power Gain	10%	15%	20%	25%
Maximum Power -P	374	391	408	425
Open Circuit Voltage -V	41.65	41.65	41.75	41.75
Short Circuit Current -I	11.28	11.79	12.30	12.81
Maximum Power Voltage -V	35.35	35.35	35.45	35.45
Maximum Power Current -I	10.58	11.06	11.51	11.99

MECHANICAL SPECIFICATIONS

External Dimension	1684 x 1002 x 35mm
Weight	18.5kg
Solar Cells	PERC Mono crystalline 158.75 x 79.38 mm (120pcs)
Front Glass	3.2mm AR coating tempered glass
Frame	Anodized aluminium alloy
Junction Box	IP68;3 Bypass Diodes
Output Cables	4.0 mm ² (12AWG), Portrait:255mm(+)/355mm(-);Or customized
Connector	MC4 Compatible

PHYSICAL CHARACTERISTICS

Unit:mm



* The above drawing is a graphical representation of the product.
For engineering quality drawings please contact ET Solar.

Units:mm(inch)
Tolerance:
Length:±2mm
Width:±2mm
Height:±1mm
Hole:±1mm

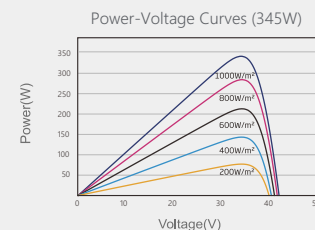
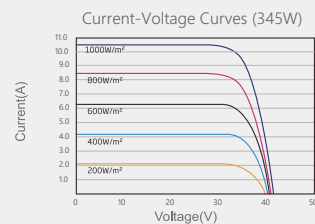
APPLICATION CONDITIONS

Maximum System Voltage	1500VDC
Maximum Series Fuse Rating	20A
Operating Temperature	-40~+85 °C
Nominal Operating Cell Temperature	45±2 °C

PACKING MANNER

Container	40'HQ
Pieces per Pallet	31
Pallets per Container	26
Pieces per Container	871

CURVE



Note: the specifications are obtained under the Standard Test Conditions (STCs): 1000 W/m² solar irradiance, 1.5 Air Mass, and cell temperature of 25°C. The NOCT is obtained under the Test Conditions: 800 W/m², 20°C ambient temperature, 1m/s wind speed, AM 1.5 spectrum.

Please contact sales@etsolar.gr for technical support. The actual transactions will be subject to the contracts. This parameters is for reference only and it is not a part of the contracts. The specifications are subject to change without prior notice.